

# KHUSHAB TOWN

DEVELOPMENT PLAN

(1978 - 95)

References

## Existing

- RESIDENTIAL
- COMMERCIAL
- INDUSTRIAL
- EDUCATIONAL INSTITUTIONS
- PUBLIC BUILDINGS  
(GOVT. OFFICES, HOSPITALS, DISPENSARIES,  
CINEMAS, CLUBS, REST HOUSES.)
- PLACES OF WORSHIP
- OPEN SPACES
- BURIAL GROUNDS
- AGRICULTURAL LAND
- AREA UNDER WATER
- TRANSPORT TERMINALS
- RAILWAY LINES
- ROADS
- BRICK KILNS
- LOW LYING AREA
- VACANT LAND
- WATER WORKS
- M.C. BOUNDARY

## Proposals

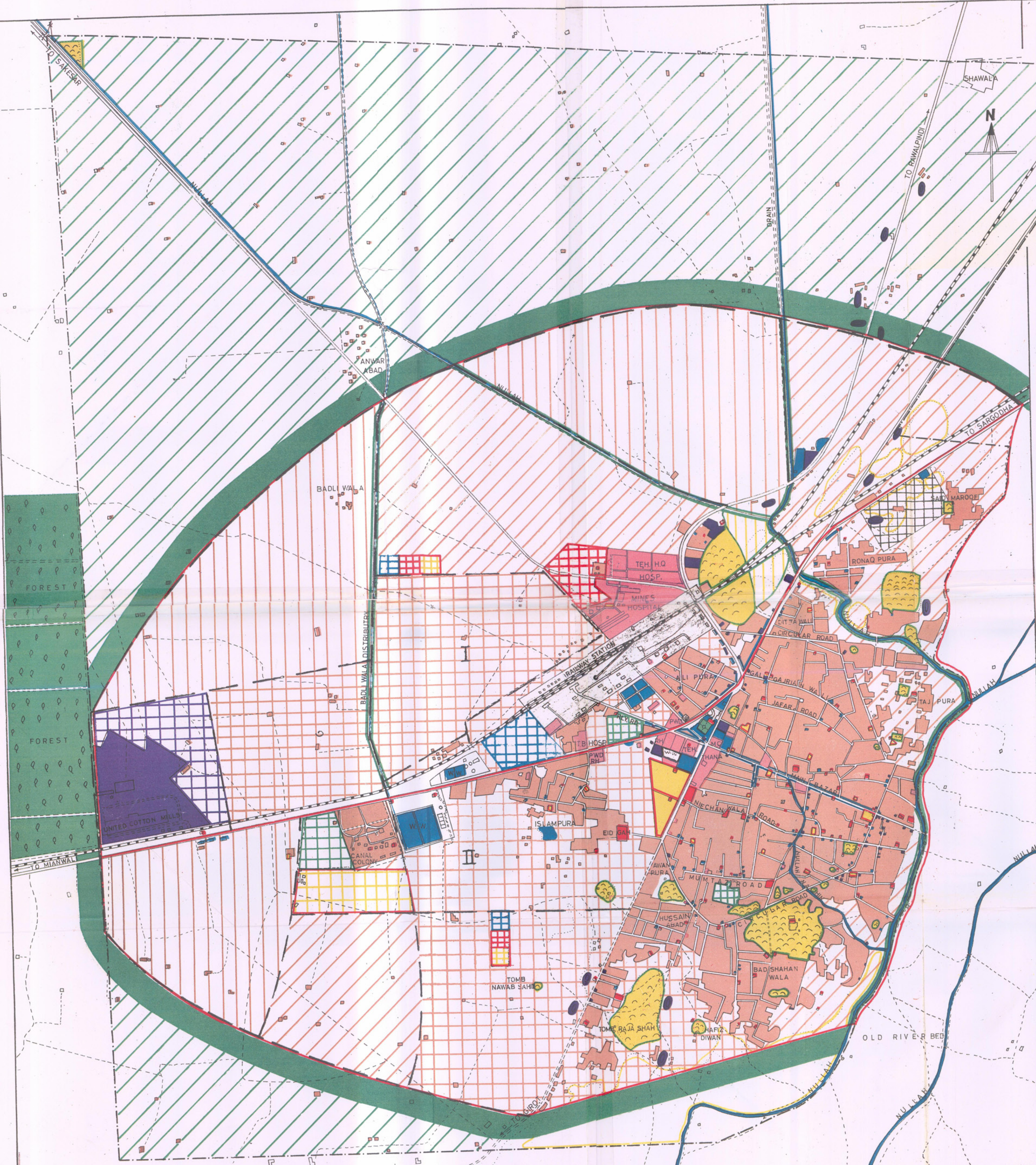
- RESIDENTIAL
  - HIGH DENSITY
  - MEDIUM DENSITY
  - LOW DENSITY
- COMMERCIAL
- INDUSTRIAL
- EDUCATIONAL INSTITUTIONS
- PUBLIC BUILDINGS CUM OFFICES
- PARKS & OPEN SPACES
- BURIAL GROUNDS
- BUS / TRUCK STAND
- GREEN BELTS
- ROADS
- PLANNING DISTRICT BOUNDARY

Scale: 1=10,000 OR 1"inch = 833.33 Feet  
 Feet: 1000 500 0 1000 2000

## OUTLINE DEVELOPMENT PLAN

DIRECTORATE OF PHYSICAL PLANNING  
 HOUSING & PHYSICAL PLANNING DEPARTMENT

TRACED BY INAM BARI	IFTIKHAR AHMAD Asstt. Dy. Director	AHMAD YAR MALIK Deputy Director
CHECKED BY INAM BARI		
DATE		
DRG. NO. 16.	NAZAR MUHAMMAD SHEIKH DIRECTOR	



# KHUSHAB TOWN (1978)



## LAND USE REFERENCES

RESIDENTIAL		TRANSPORT TERMINALS	
COMMERCIAL		RAILWAY LINES	
INDUSTRIAL		ROADS	
EDUCATIONAL INSTITUTIONS		WATER WORKS	
PUBLIC BUILDINGS (GOVT. OFFICES, HOSPITALS, DISPENSARIES, CINEMAS, CLUBS, REST HOUSES.)		LOW LYING AREA	
PLACES OF WORSHIP		M.C. BOUNDARY	
BURIAL GROUNDS		BRICK KILNS	
AGRICULTURAL LAND		KATCHA ROADS	
AREA UNDER WATER		VACANT LAND	
OPEN SPACES			



OUTLINE DEVELOPMENT PLAN		
DIRECTORATE OF PHYSICAL PLANNING HOUSING & PHYSICAL PLANNING DEPARTMENT		
DRAWN BY INAM BARI	IFTIKHAR AHMAD Asstt. Dy. Director	AHMAD YAR MALIK Deputy Director
CHECKED BY INAM BARI		
DATE		
DRG. NO. 15	NAZAR MUHAMMAD SHEIKH DIRECTOR	

SCALE:- 1:10,000 OR 1 INCH = 833.33 FEET  
Feet, 1000 500 0 1000 2000